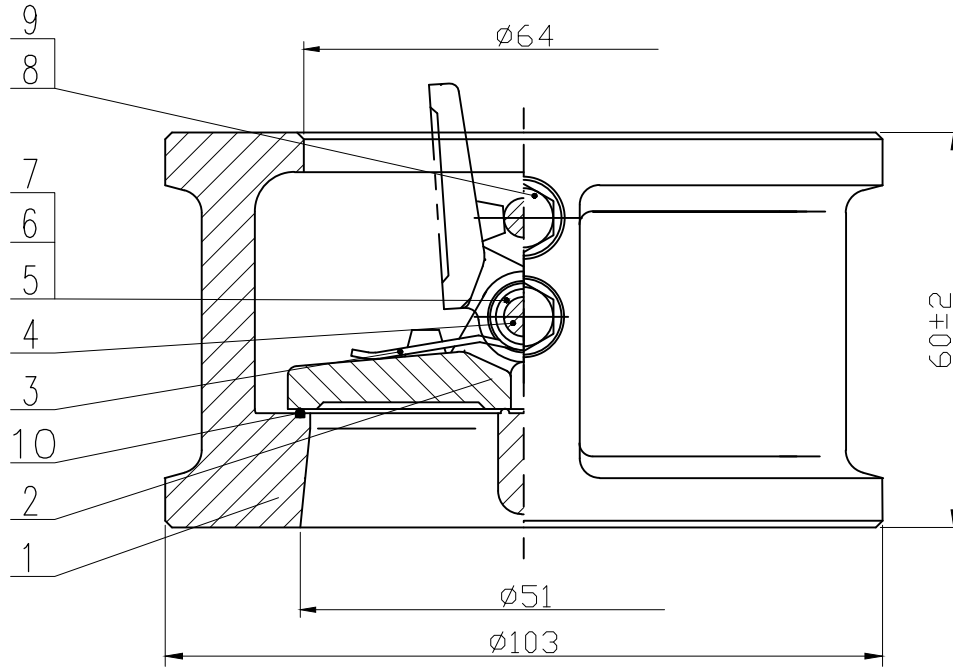


GUTTER

PROPERTY OF FBV INC., ANY UNAUTHORIZED FORM OF REPRODUCTION IS PROHIBITED

ITEM: 1



NO.	PART NAME	MATERIAL	NOTE
1	BODY	ASTM A995 4A	-
2	DISC	ASTM A995 4A	-
3	SPRING	INCONEL X750	-
4	HINGE PIN	ASTM A182 F51	-
5	END RETAINE RING	ASTM A182 F51	-
6	MIDDLE RETAINE RING	ASTM A182 F51	-
7	SPRING SEAT	ASTM A182 F51	-
8	WASHER	ASTM A182 F51	-
9	SCREW	ASTM A182 F51	-
10	SEAT	VITON	-

DESIGN & MFG.	API 594	RATING CL 150	
PRESS-TEMP RATING	ASME B16.34	SHELL	SEAT HDYRO
FACE TO FACE DIM.	ASME B16.10	3.0 435 Mpal Psi	2.2 319 Mpal Psi
END CONNECTION	WAFER	SEAT AIR	BACKSEAT
END DIMENSION	-	-	-
PRESSURE TEST	API 598	TEMPERATURE	
MARKING	MSS SP-25	-29 ~ 200 °C	-20 ~ 392 °F
OTHER REQ.	-	MEDIUM Water, Oil, Gas	

D	-	-	-
C	-	-	-
B	-	-	-
A	NEW ISSUE FOR PROPOSAL	-	-

REV	DESCRIPTION	PREP.	APP'D	DATE
DESIGN:	WYL	DATE:	04/01/2014	TAG NO.
REVIEW:	SHAWN	DATE:	04/01/2014	-
APPROVE:	-	DATE:	-	-

TITLE:
NPS 2 CLASS 150, DUAL PLATE CHECK VALVE

DWG NO.	QUOTE NO.	PO NO.
02CH1W7D200V0X	F498Q140331-2095	N12.443-A

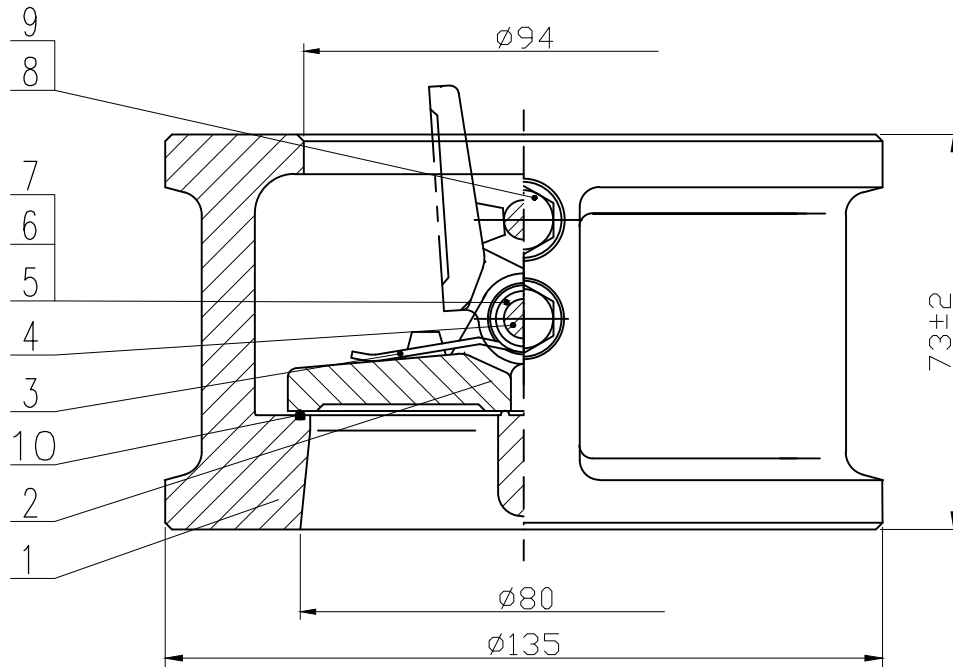
FBV
Engineered Solutions

FBV, INC.
2121 BRITTMOORE RD SUITE 500
HOUSTON, TX 77043, USA
TEL: 832-203-5459 FAX: 832-203-5461
<http://www.fbvalve.com>

GUTTER

PROPERTY OF FBV INC., ANY UNAUTHORIZED FORM OF REPRODUCTION IS PROHIBITED

ITEM: 2



NO.	PART NAME	MATERIAL	NOTE
1	BODY	ASTM A995 4A	-
2	DISC	ASTM A995 4A	-
3	SPRING	INCONEL X750	-
4	HINGE PIN	ASTM A182 F51	-
5	END RETAINE RING	ASTM A182 F51	-
6	MIDDLE RETAINE RING	ASTM A182 F51	-
7	SPRING SEAT	ASTM A182 F51	-
8	WASHER	ASTM A182 F51	-
9	SCREW	ASTM A182 F51	-
10	SEAT	VITON	-

DESIGN & MFG.	API 594	RATING CL 150	
PRESS-TEMP RATING	ASME B16.34	SHELL	SEAT HDYRO
FACE TO FACE DIM.	ASME B16.10	3.0 435 Mpa _l Psi	2.2 319 Mpa _l Psi
END CONNECTION	WAFER	SEAT AIR	BACKSEAT
END DIMENSION	-	-	-
PRESSURE TEST	API 598	TEMPERATURE	
MARKING	MSS SP-25	-29 ~ 200 °C	-20 ~ 392 °F
OTHER REQ.	-	MEDIUM Water, Oil, Gas	

D	-	-	-
C	-	-	-
B	-	-	-
A	NEW ISSUE FOR PROPOSAL	-	-

REV	DESCRIPTION	PREP.	APP'D	DATE
DESIGN:	WYL	DATE:	04/01/2014	TAG NO.
REVIEW:	SHAWN	DATE:	04/01/2014	-
APPROVE:	-	DATE:	-	-

TITLE:
NPS 3 CLASS 150, DUAL PLATE CHECK VALVE

DWG NO.	QUOTE NO.	PO NO.
03CH1W7D200V0X	F498Q140331-2095	N12.443-A

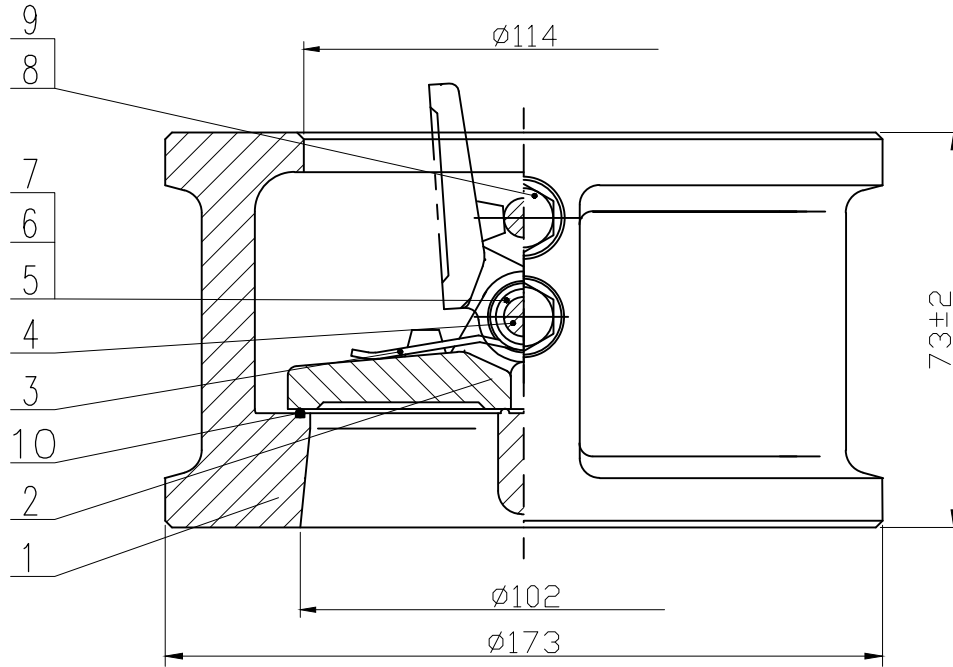
FBV
Engineered Solutions

FBV, INC.
2121 BRITTMOORE RD SUITE 500
HOUSTON, TX 77043, USA
TEL: 832-203-5459 FAX: 832-203-5461
<http://www.fbvalve.com>

GUTTER

PROPERTY OF FBV INC., ANY UNAUTHORIZED FORM OF REPRODUCTION IS PROHIBITED

ITEM: 3



NO.	PART NAME	MATERIAL	NOTE
1	BODY	ASTM A995 4A	-
2	DISC	ASTM A995 4A	-
3	SPRING	INCONEL X750	-
4	HINGE PIN	ASTM A182 F51	-
5	END RETAINE RING	ASTM A182 F51	-
6	MIDDLE RETAINE RING	ASTM A182 F51	-
7	SPRING SEAT	ASTM A182 F51	-
8	WASHER	ASTM A182 F51	-
9	SCREW	ASTM A182 F51	-
10	SEAT	VITON	-

DESIGN & MFG.	API 594	RATING CL 150	
PRESS-TEMP RATING	ASME B16.34	SHELL	SEAT HDYRO
FACE TO FACE DIM.	ASME B16.10	3.0 435 Mpal Psi	2.2 319 Mpal Psi
END CONNECTION	WAFER	SEAT AIR	BACKSEAT
END DIMENSION	-	-	-
PRESSURE TEST	API 598	TEMPERATURE	
MARKING	MSS SP-25	-29 ~ 200 °C	-20 ~ 392 °F
OTHER REQ.	-	MEDIUM Water, Oil, Gas	

D	-	-	-
C	-	-	-
B	-	-	-
A	NEW ISSUE FOR PROPOSAL	-	-
REV	DESCRIPTION	PREP.	APP'D DATE

DESIGN: WYL	DATE: 04/01/2014	TAG NO.
REVIEW: SHAWN	DATE: 04/01/2014	-
APPROVE: -	DATE: -	-

TITLE:
NPS 4 CLASS 150, DUAL PLATE CHECK VALVE

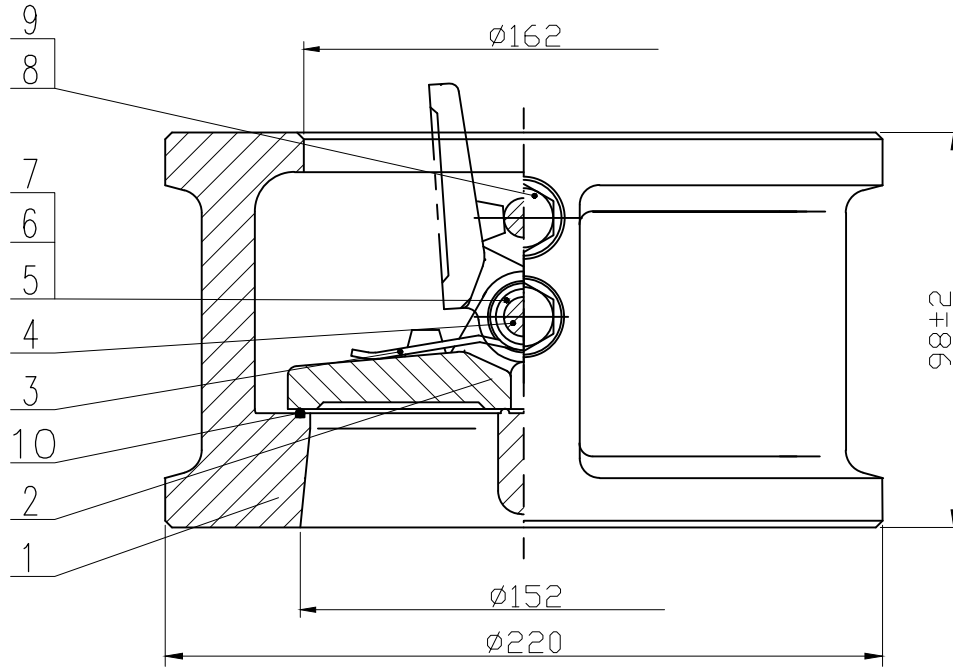
DWG NO.	QUOTE NO.	PO NO.
04CH1W7D200V0X	F498Q140331-2095	N12.443-A

FBV
Engineered Solutions
FBV, INC.
2121 BRITTMOORE RD SUITE 500
HOUSTON, TX 77043, USA
TEL: 832-203-5459 FAX: 832-203-5461
<http://www.fbvalve.com>

GUTTER

PROPERTY OF FBV INC., ANY UNAUTHORIZED FORM OF REPRODUCTION IS PROHIBITED

ITEM: 4



NO.	PART NAME	MATERIAL	NOTE
1	BODY	ASTM A995 4A	-
2	DISC	ASTM A995 4A	-
3	SPRING	INCONEL X750	-
4	HINGE PIN	ASTM A182 F51	-
5	END RETAINE RING	ASTM A182 F51	-
6	MIDDLE RETAINE RING	ASTM A182 F51	-
7	SPRING SEAT	ASTM A182 F51	-
8	WASHER	ASTM A182 F51	-
9	SCREW	ASTM A182 F51	-
10	SEAT	VITON	-

DESIGN & MFG.	API 594	RATING CL 150	
PRESS-TEMP RATING	ASME B16.34	SHELL	SEAT HDYRO
FACE TO FACE DIM.	ASME B16.10	3.0 435 Mpal Psi	2.2 319 Mpal Psi
END CONNECTION	WAFER	SEAT AIR	BACKSEAT
END DIMENSION	-	-	-
PRESSURE TEST	API 598	TEMPERATURE	
MARKING	MSS SP-25	-29 ~ 200 °C	-20 ~ 392 °F
OTHER REQ.	-	MEDIUM Water, Oil, Gas	

D	-	-	-
C	-	-	-
B	-	-	-
A	NEW ISSUE FOR PROPOSAL	-	-

REV	DESCRIPTION	PREP.	APP'D	DATE
DESIGN:	WYL	DATE:	04/01/2014	TAG NO.
REVIEW:	SHAWN	DATE:	04/01/2014	-
APPROVE:	-	DATE:	-	-

TITLE:
NPS 6 CLASS 150, DUAL PLATE CHECK VALVE

DWG NO.	QUOTE NO.	PO NO.
06CH1W7D200V0X	F498Q140331-2095	N12.443-A

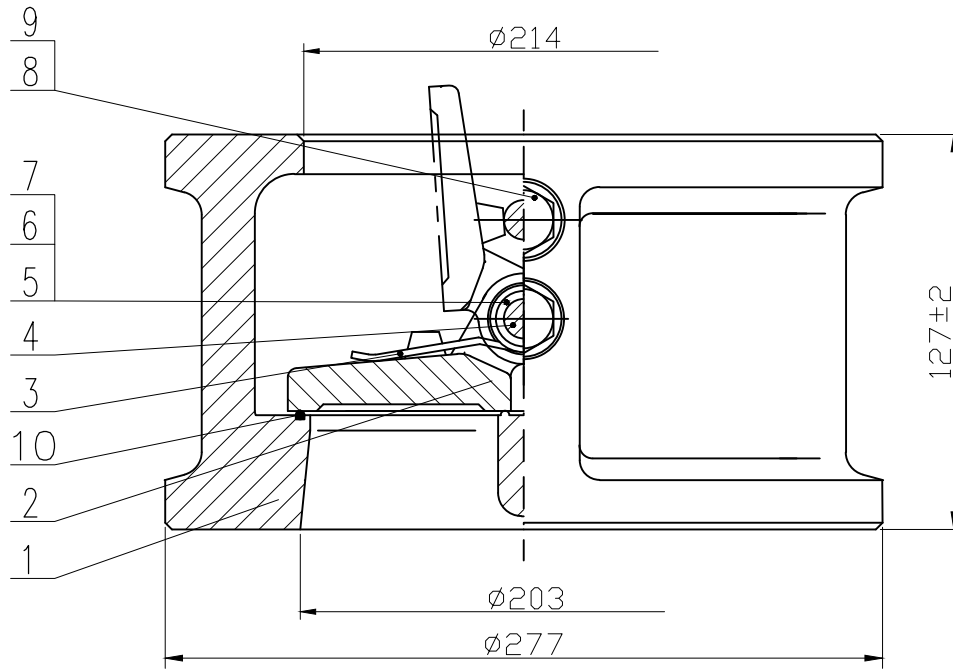
FBV
Engineered Solutions

FBV, INC.
2121 BRITTMOORE RD SUITE 500
HOUSTON, TX 77043, USA
TEL: 832-203-5459 FAX: 832-203-5461
<http://www.fbvalve.com>

GUTTER

PROPERTY OF FBV INC., ANY UNAUTHORIZED FORM OF REPRODUCTION IS PROHIBITED

ITEM: 5



NO.	PART NAME	MATERIAL	NOTE
1	BODY	ASTM A995 4A	-
2	DISC	ASTM A995 4A	-
3	SPRING	INCONEL X750	-
4	HINGE PIN	ASTM A182 F51	-
5	END RETAINE RING	ASTM A182 F51	-
6	MIDDLE RETAINE RING	ASTM A182 F51	-
7	SPRING SEAT	ASTM A182 F51	-
8	WASHER	ASTM A182 F51	-
9	SCREW	ASTM A182 F51	-
10	SEAT	VITON	-

DESIGN & MFG.	API 594	RATING CL 150	
PRESS-TEMP RATING	ASME B16.34	SHELL	SEAT HDYRO
FACE TO FACE DIM.	ASME B16.10	3.0 435 Mpal Psi	2.2 319 Mpal Psi
END CONNECTION	WAFER	SEAT AIR	BACKSEAT
END DIMENSION	-	-	-
PRESSURE TEST	API 598	TEMPERATURE	
MARKING	MSS SP-25	-29 ~ 200 °C	-20 ~ 392 °F
OTHER REQ.	-	MEDIUM Water, Oil, Gas	

D	-	-	-
C	-	-	-
B	-	-	-
A	NEW ISSUE FOR PROPOSAL	-	-

REV	DESCRIPTION	PREP.	APP'D	DATE
DESIGN:	WYL	DATE:	04/01/2014	TAG NO.
REVIEW:	SHAWN	DATE:	04/01/2014	-
APPROVE:	-	DATE:	-	-

TITLE:
NPS 8 CLASS 150, DUAL PLATE CHECK VALVE

DWG NO.	QUOTE NO.	PO NO.
08CHIW7D200V0X	F498Q140331-2095	N12.443-A

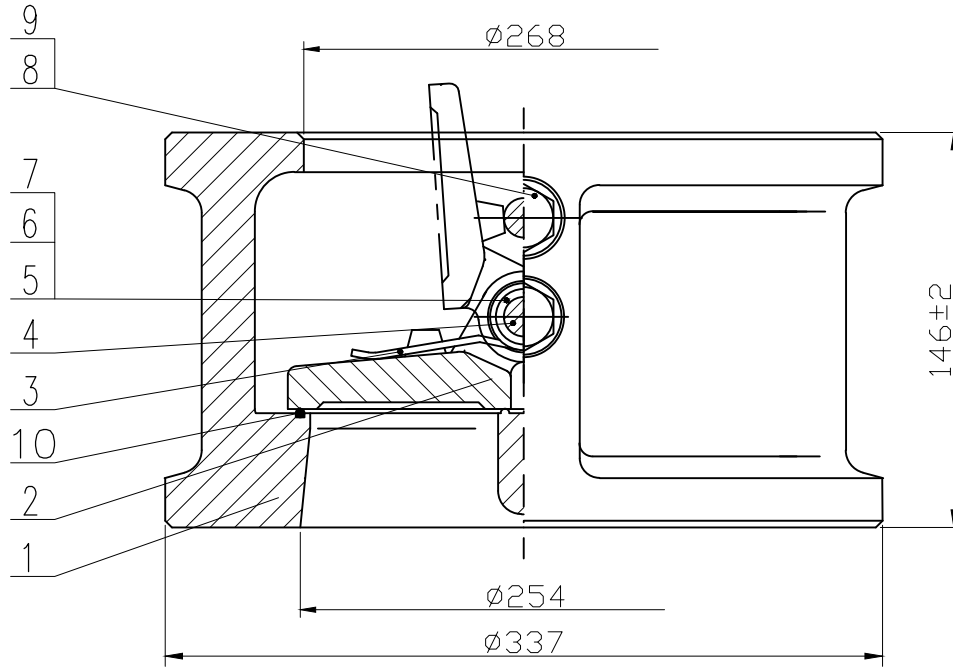
FBV
Engineered Solutions

FBV, INC.
2121 BRITTMOORE RD SUITE 500
HOUSTON, TX 77043, USA
TEL: 832-203-5459 FAX: 832-203-5461
<http://www.fbvalve.com>

GUTTER

PROPERTY OF FBV INC., ANY UNAUTHORIZED FORM OF REPRODUCTION IS PROHIBITED

ITEM: 6



NO.	PART NAME	MATERIAL	NOTE
1	BODY	ASTM A995 4A	-
2	DISC	ASTM A995 4A	-
3	SPRING	INCONEL X750	-
4	HINGE PIN	ASTM A182 F51	-
5	END RETAINE RING	ASTM A182 F51	-
6	MIDDLE RETAINE RING	ASTM A182 F51	-
7	SPRING SEAT	ASTM A182 F51	-
8	WASHER	ASTM A182 F51	-
9	SCREW	ASTM A182 F51	-
10	SEAT	VITON	-

DESIGN & MFG.	API 594	RATING CL 150	
PRESS-TEMP RATING	ASME B16.34	SHELL	SEAT HDYRO
FACE TO FACE DIM.	ASME B16.10	3.0 435 Mpal Psi	2.2 319 Mpal Psi
END CONNECTION	WAFER	SEAT AIR	BACKSEAT
END DIMENSION	-	-	-
PRESSURE TEST	API 598	TEMPERATURE	
MARKING	MSS SP-25	-29 ~ 200 °C	-20 ~ 392 °F
OTHER REQ.	-	MEDIUM Water, Oil, Gas	

D	-	-	-
C	-	-	-
B	-	-	-
A	NEW ISSUE FOR PROPOSAL	-	-

REV	DESCRIPTION	PREP.	APP'D	DATE
DESIGN:	WYL	DATE:	04/01/2014	TAG NO.
REVIEW:	SHAWN	DATE:	04/01/2014	-
APPROVE:	-	DATE:	-	-

TITLE:
NPS 10 CLASS 150, DUAL PLATE CHECK VALVE

DWG NO.	QUOTE NO.	PO NO.
10CH1W7D200V0X	F498Q140331-2095	N12.443-A

FBV
Engineered Solutions

FBV, INC.
2121 BRITTMOORE RD SUITE 500
HOUSTON, TX 77043, USA
TEL: 832-203-5459 FAX: 832-203-5461
<http://www.fbvalve.com>